

Verendrye Network News

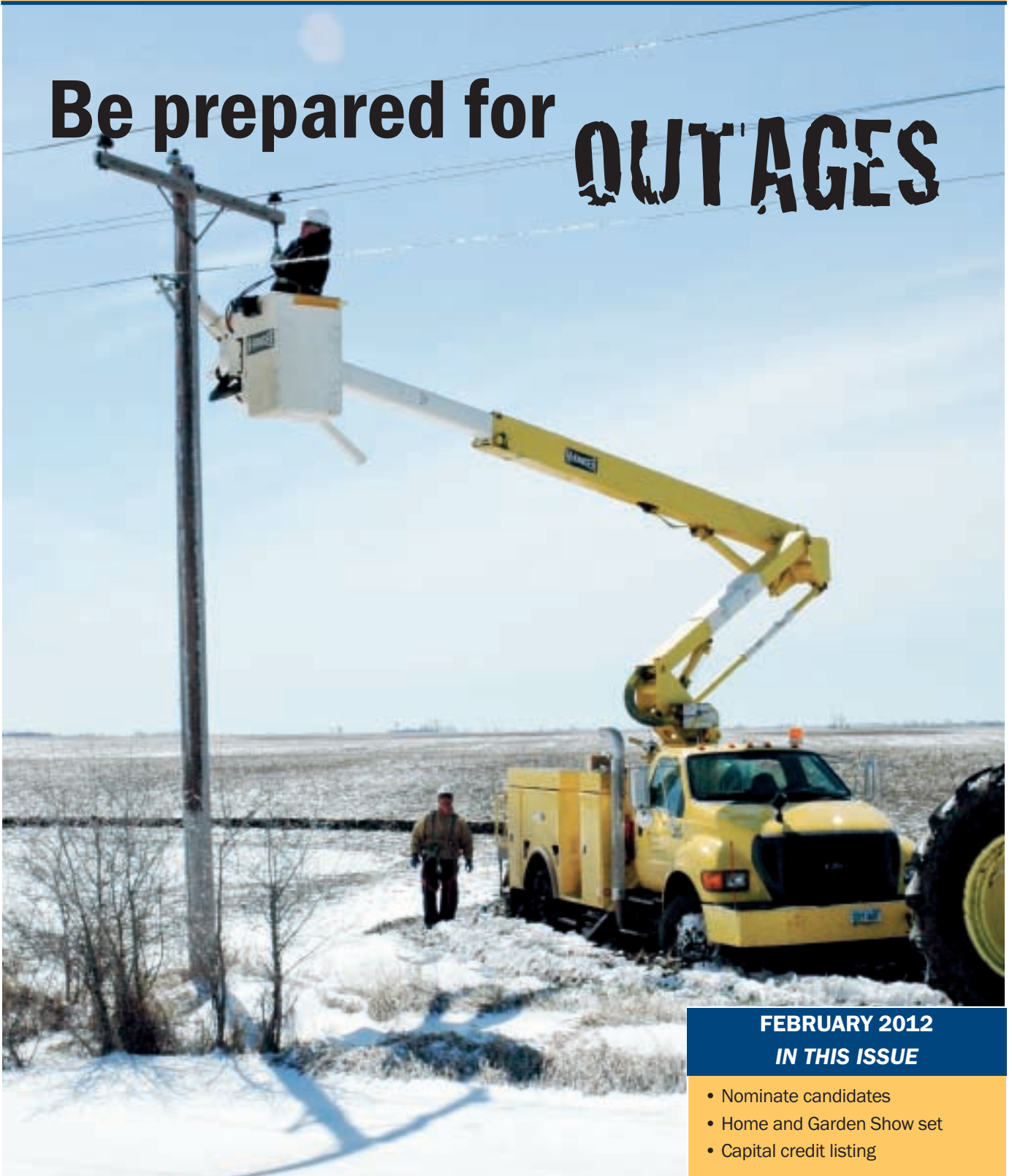
Verendrye Electric Cooperative • Velva, N.D.

Velva: (701) 338-2855 • Minot: (701) 852-0406
Web site: www.verendrye.com

A Touchstone Energy® Cooperative 

FEBRUARY 2012

Be prepared for **OUTAGES**



FEBRUARY 2012

IN THIS ISSUE

- Nominate candidates
- Home and Garden Show set
- Capital credit listing

Be prepared for outages

Although Verendrye Electric Cooperative works hard to limit power outages, they do occur and there are steps you should take to prepare your home or business. Now is a good time to think about preparing for outages because spring storms that produce heavy snow, ice and winds can cause outages.

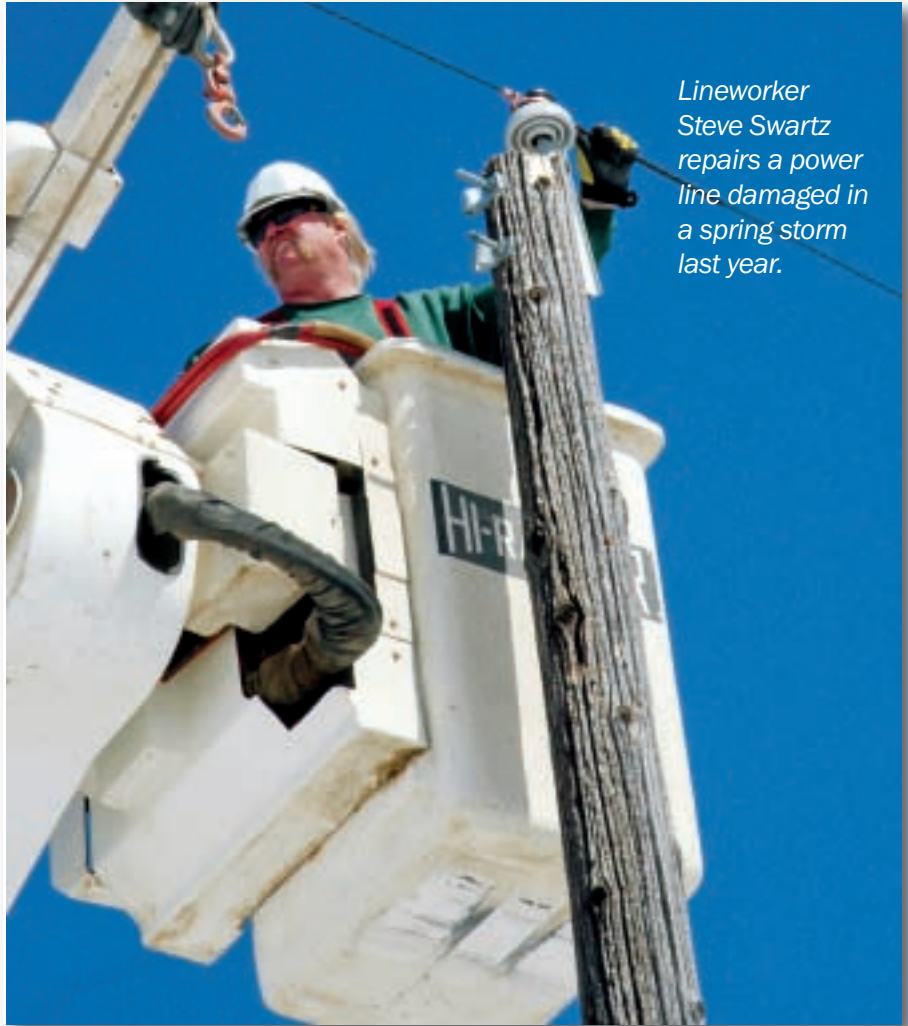
Be prepared with a generator

If you are going to use a generator for temporary power, you need to know how to run it safely, and what size will be required for your home or business. If the generator is going to be wired directly into your main panel, you must first have a double-throw switch installed. A double-throw switch prevents the generator from feeding electricity back through the power lines. If power backfeeds through the lines, transformers will step up the power and put high voltage on lines that lineworkers might be repairing. Without a double-throw switch, you could injure or kill a lineworker. Contact Verendrye for more information on installing a double-throw switch.

Before purchasing a generator, you should figure out what appliances you plan on running with it and determine the wattage of the appliances. Overloading a generator can cause damage to it or the appliances.

If you already have a generator, it should be properly maintained and you should start it once in awhile to make sure it will work when you need it during an outage. Other important tips to remember include making sure the generator is properly grounded, keeping the generator dry and never operating a generator in an enclosed space.

The following at right will give you a general idea of what size you will need.

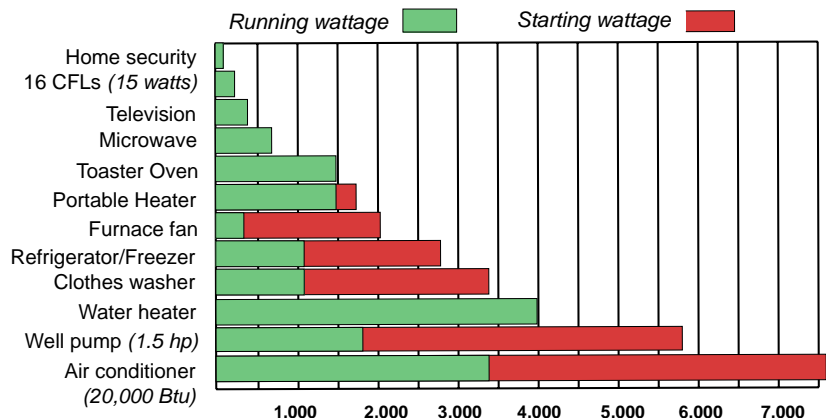


Lineworker Steve Swartz repairs a power line damaged in a spring storm last year.

The Right Portable Generator for the Job

Before purchasing or operating a portable generator, make a list of the appliances you will need to run at the same time. Find both starting and running wattage requirements on appliance nameplates or in owner's manuals; add them up to determine the total wattage your generator should handle.

Sample running wattages, as compared to spiked starting wattages:

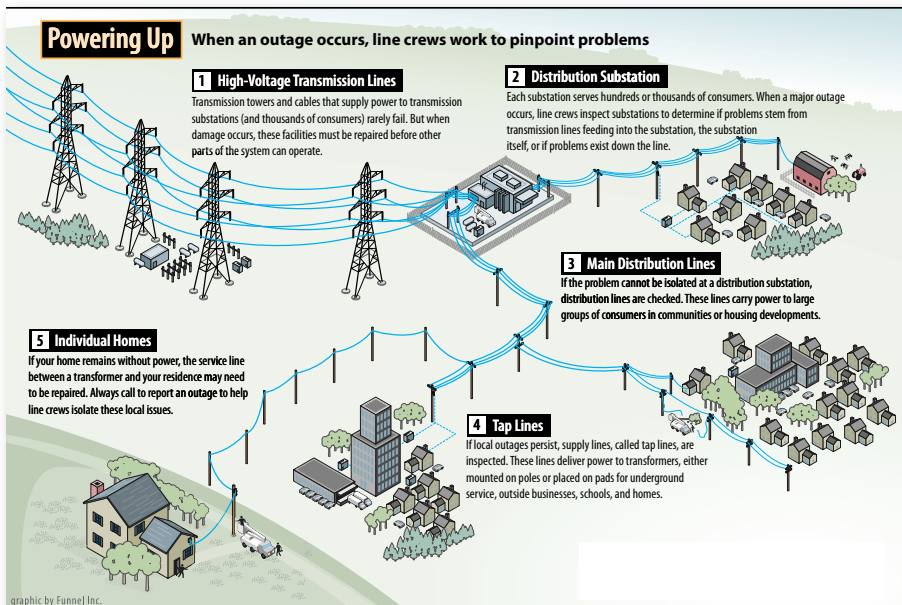


Sources: North Carolina Association of Electric Cooperatives; National Rural Electric Cooperative Association

How to report an outage

If your power goes out, you should first check your circuit breaker or fuses to be certain the problem is not your own electrical system. If that is not the case, then call Verendrye at (800) 472-2141 to report the outage. Outages can be reported 24 hours a day, seven days a week. If the lines are busy, you might get an automated message asking you to leave your phone number or account number.

When you leave your information, that information helps Verendrye restore power. Once Verendrye receives an outage call, its smart meter system kicks in by “pinging” several meters in the area of the reported outage to determine how widespread it is. An electronic map in Verendrye’s office will show which meters are working, and which are not— helping Verendrye pinpoint the cause of the outage. This helps save time because lineworkers will know exactly where to go before they are sent to make repairs.



When electricity goes out, most of us expect power will be restored within a few hours. But when a major storm causes widespread damage, longer outages may result. Co-op line crews work long, hard hours to restore service safely to the greatest number of consumers in the shortest time possible. Here’s what’s going on if you find yourself in the dark.

Notify Verendrye about MEDICAL ISSUES

Verendrye encourages members to notify the co-operative beforehand of critical life-support needs in a household. If Verendrye has this information beforehand, priority can be given to restoring power to homes with special needs and members can be notified of preplanned outages. However, members should not depend on this notification if power goes out because in extreme conditions, outages can last several days. Verendrye leases uninterruptible power supply systems to members to back up critical medical equipment or computer systems for businesses. Contact Verendrye for more information.



December e-bill winner

Congratulations to Doug and Clarice Frazier, of Minot, who won a \$100 bill credit by participating in the e-bill program. To encourage the use of e-bill, Verendrye has a contest allowing members a chance each month to win \$100 until the end of the year.

You can enter the contest simply by registering for online access to your bill, or if you already have an online account, simply log on once each month. If you are not already registered online at www.verendrye.com, you will need your account number and a valid e-mail address handy to get registered.

Once you have the information ready, click on the red “my-e-bill” tab toward the top of the home page. After clicking on “my e-bill,” there is a link for new users to register for online account access.

Verendrye encourages all of its members to view their bills online for several reasons. You can see and pay your bill a few days before it comes in the mail, you can view previous payments and bills, you can see charts comparing your total usage for several months and charts that show daily and monthly usage and cost data and you can update your account information quickly and easily.

NOMINATE CANDIDATES AT APRIL CAUCUS MEETINGS

Dates and locations to be announced in March

Editor's note: This is the fifth article in a six-month series explaining cooperative leadership and the advantages of being part of a democratically controlled, member-owned cooperative. Next month's installment will discuss how the cooperative business model incorporates principles benefitting you and your community.

Verendrye's principle of democratic member control means members not only get to vote for their directors, but they can also get their name on the ballot to become a director. April is the time when Verendrye holds annual caucus meetings where any member can be nominated to run for a spot on the board of directors.

Candidates can also be nominated from the floor during the annual meeting in June, but it is more advantageous for candidates to be nominated in April.

"Knowing in April who the candidates are gives the members time to get to know the candidates, and their names are preprinted on the annual meeting ballots," said Verendrye General Manager Bruce Carlson.

After candidates are nominated at the caucus meetings, a biography and photograph of each one will be published in *North Dakota LIVING*. Because the May magazine goes to all of the Verendrye members, it is critical for candidates to have their information in the issues prior to the annual meeting. Candidate information is also published in the annual report, which is mailed to all of the members in May.

The nomination process

Verendrye's bylaws require a caucus meeting to be held in each of the three director districts. Notice of the dates and locations of the caucus meetings is placed in Verendrye's section of *North Dakota LIVING*, and it will also be mailed to each member.

Any member can nominate another



Members attend an area caucus meeting last year in Ryder. Caucus meetings give members a chance to be nominated to become candidates for the board of directors. The dates and locations of the April caucus meetings will be announced in March.

member and there is no limit to the number of candidates that can be nominated. A nominee must be a resident of and a member of the district in which he or she is nominated.

All members are encouraged to attend a caucus meeting even if they are not there to nominate a candidate. Verendrye staff will present a short program updating members on the status of the cooperative and a free lunch will be provided.

"We want the nomination and elec-

tion process to be as open as possible to all of our members, and you can even nominate yourself if you like," Carlson said. "If you have not been to a caucus meeting, we invite you to come to one, have some lunch with us and learn more about your cooperative. The meeting locations are rotated around the director districts so they are easy to get to."

The election

The election occurs at the annual meeting in June.

There are nine members of the Verendrye board of directors – three from each district. Each director serves a three-year term and terms are staggered so that at least one director from each district is up for election each year.

Although candidates have to run for election in the district in which they live, all member owners vote for a candidate in each of the three districts.



Lineworker Jesse Suckut collects ballots at last year's annual meeting. Members who want to run for the board have the best chances if they are nominated at an April caucus meeting.



Verendrye hosted Public Service Commission in December

N.D. Public Service Commissioners Kevin Cramer, left, Tony Clark and Brian Kalk, held a hearing in Verendrye's Velva office on a proposed 102-megawatt wind farm on Dec. 15. Meadowlark Wind I LLC is proposing to build the project south of Velva. If approved by the PSC, the project would begin construction in 2012. About 35 people were at the hearing, including 25 members of the public. Although Verendrye is not associated with the project, the co-op offered to host the hearing.



Friend of 4-H

Verendrye Manager Bruce Carlson accepts the Friends of 4-H Award from McHenry County Extension Agent Raquel Dugan-Dibble. The award was given to recognize Verendrye's many years of service and financial support of 4-H.

Berthold FFA, area businesses sponsor FREE EVENT

The Berthold FFA invites the public to support students and area businesses at the annual Pride of the Prairie Winter Showcase to be held Feb. 28.

Admission is free and there will be a free meal served until it is gone.

The event takes place in the Sportsmen's Building on Main Street in Berthold from 4 p.m. to 7:30 p.m. The showcase is a customer appreciation event where area businesses display their products. In addition to the free meal, there will be door prizes and a chance to buy raffle tickets from FFA students.

There is enough space for up to 38 businesses at the event and organizers expect around 1,000 people to attend. For more information about the event, contact the Berthold School at (701) 453-3484.

Verendrye Electric will be one of the participants with a booth. Verendrye will be displaying home heating products, and will have representatives available to discuss Verendrye's programs and services.

Home & Garden Show set for March 3-4

The Minot Association of Builders (MAB) will present its 37th Annual Home & Garden Show at the Magic Place, North Dakota State Fair Center, from 9 a.m. to 6 p.m. Saturday, March 3, and 10 a.m. to 4 p.m. Sunday, March 4.

Exhibitors displaying the newest in products, materials and services from the home construction/remodeling industry, gardening/landscaping and many other associated businesses will be available in the 40,000-square-foot arena. Useful, general interest seminars will be held both days.

Representatives from Verendrye Electric will be displaying electric heat products and can answer your questions about various programs Verendrye offers.

For more information, contact the MAB office at (701) 852-0496.

YOUR NATIONAL ELECTRIC COOPERATIVE NETWORK:

841 distribution cooperatives
65 generation and transmission cooperatives
42 million consumers
40 statewide associations
7 cooperative principles
1 network

To learn more, visit:

<http://www.youtube.com/ndarec>



Co-ops build a better world

All around the world, people celebrate a business model that puts members first, uses innovation to continually improve and provides local service while being part of a global network.

Cooperative enterprises build a better world – and co-ops around the world are joining together to celebrate the International Year of Cooperatives in 2012.

Electric cooperatives and other members of the co-op family take center stage globally in 2012, designated the International Year of Cooperatives by the United Nations General Assembly.

The International Year of Cooperatives theme, “Cooperative Enterprises Build a Better World,” resonates with co-ops in the electric, banking, food, retail, housing and marketing arenas.

“The cooperative movement balances both economic viability and social responsibility,” remarked United Nations Deputy Secretary-General Dr. Asha-Rose Migirom at the launch of the International Year of Cooperatives. “Cooperatives make enormous contributions not only to their members, but to their commu-

ities and societies. They help to reduce poverty and create jobs.”

Not only does 2012 mark a global celebration of the cooperative business model, it also marks the 50th anniversary of the National Rural Electric Cooperative Association’s International Programs.

Working together, more than 300 U.S. electric cooperatives have delivered the benefits of safe and reliable electric service to more than 100 million people in 40-plus countries since November 1962.



Building a better world takes experience, and no group has more experience in bringing low-cost power to remote areas than electric co-ops.

U.S. co-ops play huge role in economy

- More than 900 electric co-ops deliver electricity to more than 42 million people in 47 states. This makes up 42 percent of the nation’s electric distribution lines and covers 75 percent of our country’s landmass.
- About 1.2 million rural Americans in 31 states are served by the 260 telephone cooperatives.
- More than 29,000 cooperatives operate in every sector of the economy and in every congressional district; Americans hold over 350 million co-op memberships.
- U.S. cooperatives generate 2 million jobs and make a substantial contribution to the U.S. economy with annual sales of \$652 billion.
- The majority of our country’s 2 million farmers are members of the nearly 3,000 farmer-owned cooperatives. They provide more than 250,000 jobs and annual wages of over \$8 billion.
- More than 7,500 credit unions provide financial services to 91 million U.S. consumers.

CAPITAL CREDITS UNCLAIMED

| | | | | | |
|---------------------------------|---------------------------|------------------------------|--------------------|-----------------------------|------------------------------|
| Aaenson, Edward | Bordage, Joseph | Darling, Greg | Frost, Dale | Hegdahl, Gilbert | Kaylor, Virgil |
| Abbey, Delores | Borgers, Paul | Davick, Mike | Fuchs, Jerry | Hegle, Tom | Keller, Gary |
| Adams, Phillip | Bostow, Terry | Davidson, Tom | GTA | Heidi, Christmann | Keller, Greg |
| Adams, Ralph | Bowen, Don | Davis, Adam | Gaines, Orlando | Heilman, Kenneth | Keller, Jamie |
| Ahmed, Zafar- Visitin F. Sr. | Bowen, Gary | Davis, Sheri | Gallagher, Randy | Heise, Margaret | Kelley, Lloyd |
| Alder, Tim | Bowen, Jim | Degroat, Gabriel estate | Gardi, Mahammed | Helsene, Jeffrey | Kelly, Dan |
| Ali, Collette | Boyd, Robert | Delo, Joshua L. | Garrity, Thomas | Helseth, Kurt | Kelly, Sean |
| Allick, Shannon | Bratvold, Susan | Depco Inc. | Gehringer, Earl | Helseth, Pete | Kephart, Robert |
| American Man | Brenna, Jessie | Desjarlais, Jamie L. | Geiselman, Kevin | Hendrickson, John | Khalil, Raslan |
| Anderson, A.K. | Brenno, Chad | Desmonds | George, Michael | Hennix, Greg | Killu, Keith F. |
| Anderson, Darryl | Brignall, Jo A. | Devoe, Michelle | Gervais, Janet | Heyen, James W. | Kilvien, Larry |
| Anderson, Dempsey | Britt, Kenneth | Dirks, Jennifer | Gibson, Arthur J. | Hieb, Perina | Kim, Ji H. |
| Anderson, Erick | Brockey, Kathleen | Dixon, Flora M. | Giesler, Michael | Hildre, Anita | Kimball, Mary |
| Anderson, Leroy | Broman, Parker C. | Dobbs, Wendy | Gillings, Jennifer | Hinton, David | Kimball, Robert |
| Anderson, Megan | Brooks, Evelyn | Dobrinski, Pearl | Gillmore, Timothy | Hobbs, Jud | King, Charles |
| Andrews, James | Brostrom, Pearl C. | Dockters, Electric | Gillstrap, John | Hoffer, Bryan L. | Kirkwood, Randall |
| Anhorn, Blair | Brown, Ann | Dominguez, Gaspar | Giltner, Lloyd A. | Hoffer, Nicole | Kjos, Sandi W. |
| Aoun, Gaby | Brown, Jerry W. | Dooley, Ed | Gleason, Michelle | Honigs, Michael | Klein, Tetor D. |
| Arndt, Charles | Bruhn, Earl | Duchsherer, George | Glover, Russel | Hopkins, Stephannie | Klein, Theresia |
| Arneson, Mike | Brummond, Barbara | Duke, Graham | Goetz, Sandy | Hornbacker, Ladell | Knodel, Rodney |
| Arneson, Rodney | Buechler, Dean | East Side Service Station | Goldade, Allen R. | Hornung, Peggy | Knutson, Kristian E. |
| Arneson, Tim | Bunch, Helen | Ebel, James A. | Gonce, Cathy | Houim, Penny | Knutson, Wilbert |
| Arnie's Insulation | Burckhard, Corrie | Ebertowski, Mary | Goodman, Danny | Hove, John | Koch Hydrocarbons |
| Arrington, Jason | Burghdoff, Brad | Eckdahl, Rosanna | Goze, Florence | Howard, Herbert | Kollman, Cindy |
| Azure, Layton P. | Burk, Jason | Effertz, Roger | Goody, Barbara A. | Hrichena, Phillip | Kon, Schah K. |
| Baker, Brian | Butler, Damon | Endicott, Johnson | Grabow, Cindy | Huber, Corrie | Kost, Audrey |
| Baker, Dianne | Butts, J.D. | Enghusen, Willard | Graham, Bryon | Huckaby, Opal | Kost, Lee W. |
| Baker, James | C and M Enterprises | Enno, Wayne A. | Gray, Steve | Humphries, Latreace | Kraft, Terry |
| Barboza, Jamie | Cafe Continental | Erickson, Dale | Great Expectations | Humphries, Ron | Kramlick Investments |
| Barnes, Dennis | Campbell, Wayne | Erickson, Ron | Green, Patrick | Hunt Energy Corp. I | Kraus, Sabrina C. |
| Barros, Machel | Candy Corn | Erickson, Steve | Greer, Kenneth | Huntzinger, Dale | Krismer, John |
| Bassett, Bryan | Cardenas, Raul | Erikstein, Marsha | Gresap, Guy | Hurricane Race Cars | Krout, Richard |
| Baukol, Arlan | Carmichael, Larrie | Ernstine, Roy | Grinde, Harold | Hyatt, Linda S. | Kruckenberg, Marvin |
| Bauman, Greg | Carroll, Robert | Erskine, Anthony | Gron Dahl, Mike | Igoe Construction | Krueger, Calvin |
| Baumgarten, Jacob | Cartwright, Danielle | Erwin, Kenneth | Gruenberg, Becky | Industrial Developers | Kuntz, Larry |
| Becker, Mark | Case, Henry | Esberg, John | Gullickson, Brian | Ingold, David | Lafromboise, Stacie |
| Beechie, Barry | Casey, Almus G. Jr. | Evenson, Sarah | Gunsch, Curtis | Ingorvate, John | Lang, Marc |
| Beeter, Marie | Cates, Dennis W. | Fairbanks, Rick | Gutknecht, Kevin | Ingram, Joseph | Langdon, Larry |
| Behm, Lindsay | Cellular Plus | Farley, William | Hagens, Michael | Iron, Road M. | Larsen, B.S. |
| Behrens, Kirwin | Cenex Soil Service | Faul, Alvin A. | Hagen, Shelly | Isakson, Jodi | Larsen, Melissa |
| Belgarde, Joe J. | Chavez, Bill | Fear, Steven | Hahn, Gregory | J Quarter Circle | Larson, Charles J. |
| Bennett, Freddy | Chernak, Ronald | Feehan, Jack | Halliday, David | Jackson, Cheryl L. | Larson, Don |
| Beno, John | Choquette, Mark | Ferris, Steve | Hal's Sports Wear | Jacobson and Sons Const. | Larson, Ronald |
| Benton, Wannetta | Christensen, Ansgar | Fettig, Ludwig | Halseth, Cassidy | James, Shamekia | Lavallie, Sandra |
| Berg, Dawn | Christensen, Jill | Field, Mary J. | Haman, Alfred | Janzen, Dale | Lawrence, Latricia |
| Berg, Emil | Christensen, Terry | Fike, William | Haman, Ray | Jenish, John | Lawson, Gene |
| Berg, Todd | Chydria, Daniel | Fine, Richard | Haman, Richard | Jenner, Eugene | Lee, Dorothy C. |
| Berg, Wayne | Clark, Rebecca | Fink, Stan | Hambeck, Tammie | Jenner, Robert | Lee, Kynn |
| Berg, Homes | Clark, Robert | Finka, Gary A. | Hammons, Jeremy | Jensen, Gail | Leforte, Jerry |
| Bergan, Eileen | Clay, Tom | Fleck, Aelred | Hansen, August A. | Jensen, Michelle | Lehmann, Jeff |
| Berndt, Dave | Cockrell, Betty J. | Flood, Luanne | Hansen, Darrell | Jewett, Melissa | Leichtman, Linda |
| Berndt, Ken | Cockrell, Chris | Flores, Brock | Hansen, John C. | Johnson, Chris A. | Lemer, Frances |
| Berntson, Ruth | Colby, Vivian | Florida Exploration | Hanson, Darrel | Johnson, G.A. | Lemieux, Nora |
| Berry, Alvin | Coleman, Joel | Folkner, Jim | Hanson, Kenneth J. | Johnson, Jeremy | Lemke, Connie |
| Bertsch, Ilene | Colins, Jim | Food Enterprises | Hanson, Wayne | Johnson, Joel M. | Lennick, Bruce |
| Beyer, August | Conklin, Michael | Fortner, Donald | Harger, Greg | Johnson, Mark E. | Leonard, Warren J. |
| Beyer, Ben | Connors, Edith | Foster, Amanda | Harksen, Michelle | Johnson, Michael | Lesmeister, Jeff |
| Bigwood, Charles | Conroi, Marsha | Foster, Barbra | Harrington, Keith | Johnson, Paul | Levinsons, Byron |
| Binder, Kenneth | Cooper, Tawanda | Fox, Stephanie | Harris, Brian | Johnson, Robert | Lewis, Bob |
| Birkestrand, Ronald | Cox, Myron R. | Frame, Morrey | Harris, Jason | Johnson, Ron | Lewis, William |
| Biscoe, Barry | Cox, Victoria | Franke, Jason | Harris, Jerry | Joia, Manuel | Liddle, Allison L. |
| Black, A.C. | Craig, Alice | Franzer, Tim | Harris, Monique | Jones, Casey | Lider, Pam |
| Black, William J. | Crestoni, Joseph | Fredericks, Crystal L. | Hartleib, Ashley | Jones, Dwaneen | Liebelt, Donald |
| Blatner, D.H. and Sons | Cross, Jim | Freese, Noreen | Hartleib, Darrold | Jones, Jerry | Liebelt, Lavern |
| Blessum, Darold | Cross, Robert | Frey, Ida | Harvey, Lynda | Jones, Marcianna | Lighthouse Baptist Church |
| Bolles, Kirk | Cutaiair, Joseph | Frink, Scott | Haselton, Karen | Jones, Stanley | Lima, Joseph |
| Bondly, James | Dahl, Charles | Frontier-Midwest | Haser, Lance | Kaiser, Dennis | Liming, William |
| Bonebrake, Eric | Dahl, Gary | | Hass, Loren | Kannianen, Maria | Lindsay, Bartley |
| Bonner, Ed | Dakota Lane Partners | | Hasser, Andrew | Karna, Evelyn | Lindstrom, Jennifer |
| Booth, Thomas | Dakota Prairie Runners | | Heck, Brian | Karna, Leo | Llewellyn, Lynn |

CAPITAL CREDITS....continued

| | | | | | |
|-----------------------|---------------------|------------------------|------------------------|-----------------------|--------------------------|
| Lockwood, Lois | Myers, Dwight | Pratt, Lealon | Scheele, Bob | Susman, Bret | Waltzer, Larry |
| Logsdon, Micheal Jr. | Myers, Jack | Price, Ken | Schell, Kenneth | Sutter, Ron | Wanbgsang, Jacob |
| Loveless, Lloyd | Nehr, Albert | Pritchard, Leon | Schiff, Jerome | Swanko, Edward | Warner, Tim |
| Luce, Brian | Nelson, Arlynn | Przybysz, Robert | Schiff, John | Swanson, Ron | Warren, Brian |
| Luedke, Ida | Nelson, Helen M. | Quality Painting and | Schimke, Arnold | Swartz, Jeff | Warren, Patrick |
| Lukenbach, Douglas H. | Nelson, Lisa | Lettering | Schlak Farms | Sziszak, Frederick | Wartner, Al |
| Lund, Shane | Nelson, Marlyn | Quiambal, Francis | Schmidt, Fred | Tavis, Joe G. | Waswick Farm |
| Lushenko, Lisa D. | Nelson, Rick | Quinonez, Jenifer | Schmidt, John | Taylor, E.H. | Account |
| Macomb, June | Nelson, Terrilyn | Racine, Galyn | Schneibel, Vickie | Taylor, Les | Watson, Rubina |
| Maddock, Melvin | Nettleton, Gary L. | Raghib, Ender | Schock, Troy E. | Tennant, Richard | Webster, Charles |
| MAFB Rod & Gun Club | Newell, Vicki | Rahn, Robert | Schoppert, Carolyn | Ternes, Wendy M. | Weikum, David |
| Mah, Thet T. | Nichol, Wm. | Ramos, Rommel | Schroeger, Erich | Texas Oil and Gas | Welch, Tom E. |
| Mahany, Doug | Nichols, Mark | Ramsdell, Gerald | Schuller, Larry | The Louisiana Land & | Wells, John S. Jr. |
| Maher, David | Nodakable Inc. | Ramsey, Ted | Schwark, Alfred | Company | Welton, John |
| Mandels Inc. | Noelte, Michael W. | Rau, Michelle M. | Schwarz, Linda | Thee, Douglas | Wendt, Mark |
| Maner, Alred | Nord, Alesha | Ray, Dalton | Schwede, David | Thomas, Julie | Weninger, Andrew |
| Mangen, Richard | Nord, Gary D. | Raymond, Roger | Schwuchow, Billie | Thomas, Linus Jr. | Wentz, Al |
| Mann, James | Norfleet, James | Ray's Welding | Scott, Gloria | Thomas, Scott B. | Wentz, Richard |
| Mantaro, Jason | North Hill Used | Reed, Charles | Scott, Lynn | Thompson, Bryan | Werre, Art |
| Markle, Steven J. | Northern Tier Ranch | Reed, Chase | Scully, Tim | Thompson, Lavern | Werth, Edward |
| Marquez, Joseph | and Auto | Reichelt, Marcus | Seiffert, Tamryn | Thompson, Lavonne | Westergard, Agnes |
| Marshall, Michael | Nott, Martha | Reiner, Elmer | Shamrock, Comm Inc. | Thompson, Robert | Westgo Truck Equip. |
| Martinez, David | Nygaard, Peggy | Reinke, Greg | Shaver, Prestly J. Jr. | Thompson, Ronald | White, Bernie |
| Martinson, Erling | Odland, Bryant W. | Remmick, Eugene | Shelkey, Cameron | Thorstenson, Jim | White, Evangelina |
| Masters, Donns | Olaf, Jerome L. | Resolution Trust Corp. | Shipman, George | Thrall, Greg | Whitmore, Terence |
| Mates, Michael | Olsen, Terasia | Reynolds, Robert J. | Short, Paul | Tofstad, Lonnie | Widerstrand, Dale |
| Matson, Christa | Olson, Gale | Rhodes, Jim | Siderowicz, Steve | Torgerson, John | Wilcox, William |
| Mattern, James | Olson, Gary R. | Richards, Steven | Sielig, Hazel | Traynor, Scott | Willhight, Donald L. Jr. |
| Matties, Allan | Olson, Hal J. | Ricks, Jim | Siemers, Michele | Tribitt, Carol | Williams, David |
| Mattson, Mark A. | Olthoff, Donald | Rinn, Dr. | Sillerud, Ryan | Turner, Alexander E. | Williams, Frank |
| Maule, Bryan A. Jr. | Omar, Rae | Rippel, Jason | Silva, Stephanie | Turner, Melanie | Williams, Raleta |
| Mazepink, Walter | Omeara, William | Roberson, Richard | Silvers, Douglas | Tveter, Jayson | Willoughby, Glen |
| McCauley, Dennis | Ommen, James P. | Roberts, Bradley | Simmons, Deshawn | Tweten, Tab | estate |
| McClain, Tracy | Orient Express | Roberts, Mary | Skaare, Bethany | Valente, Joanne | Wilson, Renda L. |
| McCloud, Norman | Oster, Bert K. | Roberts, Warren | Sleeper, Patti | Valle, Ernesto | Wilson, Richard |
| McClure, Jarrett | Otterness, Wanda | Robertson Lumber | Smart, Donovan D. | Van Eckhout, J. | Winter, John |
| McCurly, Sam | Owitt, Edith R. | Robinson, Thomas | Smestad, Leonard A. | Van Meter, J. | Womack, David |
| McGregor, Thomas | Pacific West E. | Robson, Mandy | Smith, Brian | Vandeberge, Ken | Wood, Jan |
| Mcintosh, Muriel | Painter, Rodney | Rodgers, David | Smith, Keith B. | Vandenbussche, Jeff | Wright, Larry |
| Meacham, Hollie | Pallotta, Pasquale | Roerick, Dennis | Smith, Leonard | Vaudt, Cheryl | Wyatt, Nelson |
| Meldahl, Fred | Palser, Mary B. | Rogers, John | Smith, Mike | Vera, Chris | Yarber, Mike |
| Meyer, Jerry | Palumbo, Joseph | Roll, James | Smith, Ronald | Vining, John S. | Young, David |
| Meyers, Stanley | Paterson, Coralee | Rone, Louis B. | Smith, Sherman | Vold, Bruce | Young, Gregory S. |
| Michaelson, Leroy | Peanut Shack | Roness, Shawn | Snellings, Mark | Volk, Don L | Young, Melanie |
| Michaelson, Ruth | Pearson, Tracy | Ronholdt, Liza | Sohrenssen, Steven | Vondrachek Family | Young, America |
| Mikkelsen, Sherman | Pederson, Laverne | Ronnie, Judy | Souris River Racing | LLP | Zahn, Virgil |
| Miller, Chuck | Pederson, Lisa K. | Rowland, Shawn | Souza, Blayne | Wainoco Oil & Gas Co. | Zayed, Farid |
| Miller, Kelvin | Pederson, Van | Roy, John | Spalla, Frederick C. | Walhood, Kim | Zochert, Nathan |
| Miller, Milton | Pengilly, Dan | Rucker, Glenn A. | Spaulding, Kris | Wallace, Tracy | Zolondek, Jack |
| Miller, Ray | Pennington, Wendy | Rudland, Eugene | Specht, Tara | Walsh, John S. | Zuck, Joseph |
| Mills, Ronald | Perrone, Tracey | Rudnick, Joseph | Stacy, Thomas | | |
| Minot Auto Plus | Persinger, Mark A. | Ruh, Michael | Steamer and Beef | | |
| Minot Comm. Chapel | Peterson, Milton | Russell, Ryan | Stenseth, Marvin | | |
| Minot Indoor Tennis | Peterson, Peter | Rutherford, Darwin | Stephens, Timothy A. | | |
| Minot Motor | Peterson, Ronald G. | Ryan, Kevin | Stevenson 215 Dbtr. | | |
| Mitchell, Edward | Peterson, Tim | Ryan, Steven | Pssn. | | |
| Mitzel, Kurtis J. | Peterson Excavation | Sachse, Weldon | Stewart, Mike | | |
| Moen, Borghild | Petro Lewis Corp. | Saddin, Mohammad | Stille, W.T. | | |
| Moen, Glen | Pettit, Bruce | Sailer, Brock | Stimpson, Amy | | |
| Moffit, Bruce | Pettys, Russell V. | Salas, Leonicio | Stone, Duane | | |
| Moger, Lois | Pfleiger, Dennis | Salenko, Sam | Strand, Kristine | | |
| Mohl, James | Phillips, Daniel | Sampson, Frank | Strange, J.C. | | |
| Moses, Marjorie | Picconatto, Al | Samuels Jewelers | Streifel, Jeffrey J. | | |
| Mousel, Eric | Pierce Inc. | Sand, Gladys | Streitz, Michael | | |
| Muckler, Christian W. | Piotroski, John | Sands, Warren | Stroh, Heidi | | |
| Mueller, Nancy | Poblano, Sully | Sanford, Doug | Studaker, Elizabeth J. | | |
| Mulroy, Matthew E. | Polington, Cody | Schaan, Ralph | Suburban Homes | | |
| Murphy, Jessica | Pollard, Ed | Schaeffer, Roger | Suiter, Rick | | |
| Murphy, Patrick | Pope, Jonathan | Schanlaub, Clarence | Summerfield, Don | | |
| Murray, Ned | Power, Graham | Schauer, Emelia | Summers, G.E. | | |
| Musich, Steve | Prairie Farms | Schauer, Kathleen | Sundby, Ty | | |

VERENDRYE ELECTRIC COOPERATIVE

Velva, N.D. 58790

Bo ar D Pr Es iDENt
Everett Dobrinski

MaNag Er
Bruce Carlson

EDit or
t om r afferty

Velva: (701) 338-2855

Minot: (701) 852-0406

t oll-Free: (800) 472-2141

Web site: www.verendrye.com

E-mail: rec@verendrye.com

A Trichrome Energy Cooperative 